

Characteristics / Ordering Code

Pilot operated pressure relief valves series ZDV are designed for maximum flow rates.

The relief function can be located between P and T, A and T, B and T or A and T + B and T for typical pressure relief functions.

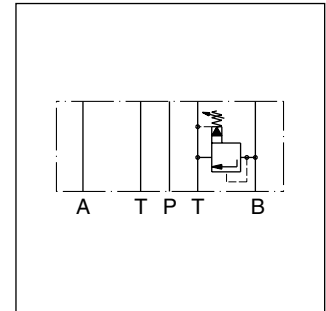
For a pre-charge function the ZDV can be ordered with pressure function between A and B + B and A.

Features

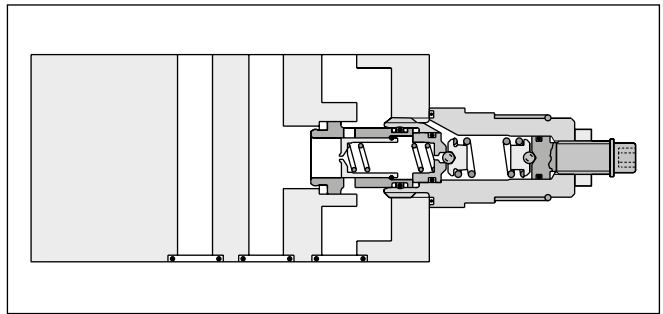
- High flow capacity
- Pressure function in P, A, B or A + B
- Sizes
ZDV01 - NG06 (CETOP 03)
ZDV02 - NG10 (CETOP 05)



ZDV-P01



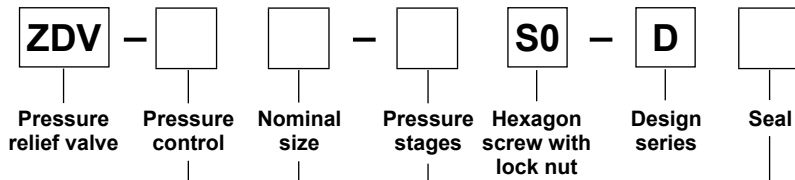
ZDV-B02



ZDV-B02

7

Ordering code



| Code | Size | Pressure control |
|------|---------|------------------|
| P | NG06/10 | P - T |
| A | NG06/10 | A - T |
| B | NG06/10 | B - T |
| AB | NG06/10 | A - T & B - T |
| ABS | NG06/10 | A - B & B - A |

| Code | Nominal size |
|------|--------------|
| 01 | NG06 |
| 02 | NG10 |

| Code | Seal |
|------|------|
| 1 | NBR |
| 5 | FPM |

| Code | Pressure stages |
|-----------------|-----------------|
| 1 | up to 70 bar |
| 5 ¹⁾ | up to 350 bar |

Ordering code details see end of chapter.

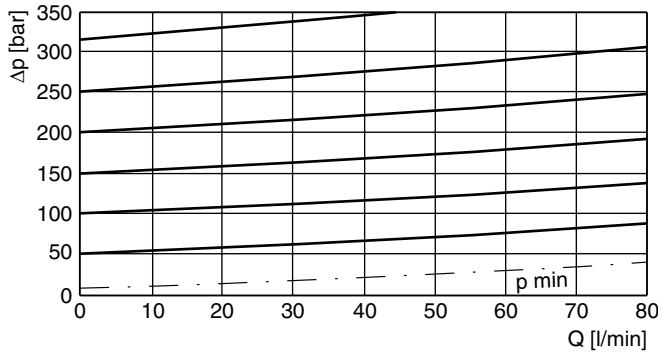
¹⁾ Code ABS and size 10 up to 315 bar.

Technical data

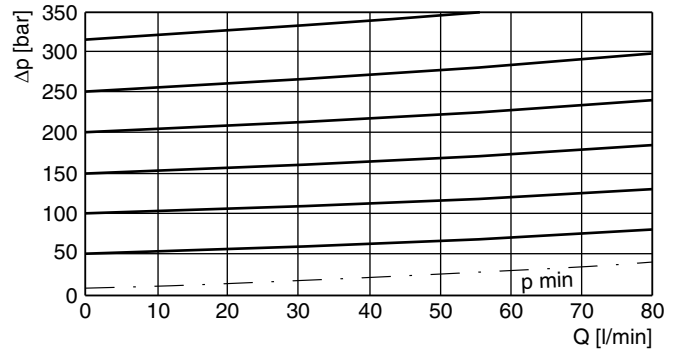
| General | | | |
|-------------------------|--|--------------------------------------|---------------------------------------|
| Size | | NG06 | NG10 |
| Mounting interface | | DIN 24340 A6 ISO 4401 NFPA D03 | DIN 24340 A10 ISO 4401 NFPA D05 |
| | | CETOP RP 121 | |
| Mounting position | | unrestricted | |
| Ambient temperature | [°C] | -20...+60 | |
| MTTF _D value | [years] | 150 | |
| Weight | 1 cartridge [kg] | 1.6 | 3.0 |
| | 2 cartridges [kg] | 2.5 | 3.7 |
| Hydraulic | | | |
| Max. operating pressure | [bar] | 350 (ZDV-ABS 315) | 315 |
| Nominal flow | [l/min] | 80 | 140 |
| Fluid | | Hydraulic oil according to DIN 51524 | |
| Fluid temperature | [°C] | -20...+70 (NBR: -25...+70) | |
| Viscosity | permitted [cSt] / [mm ² /s] | 20 ... 400 | |
| | recommended [cSt] / [mm ² /s] | 30 ... 80 | |
| Filtration | | ISO 4406 (1999); 18/16/13 | |

p/Q performance curves

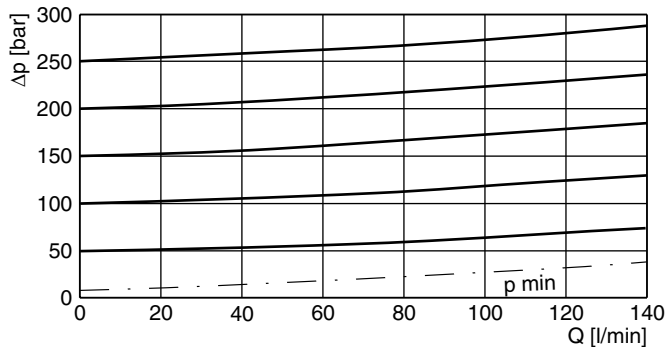
ZDV-P/A/B/ABS01



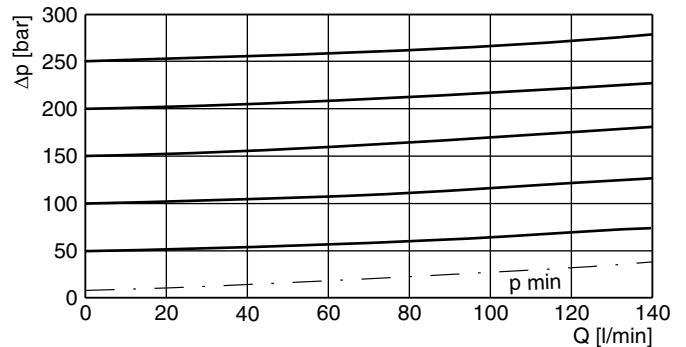
ZDV-AB01



ZDV-P/A/B/AB02

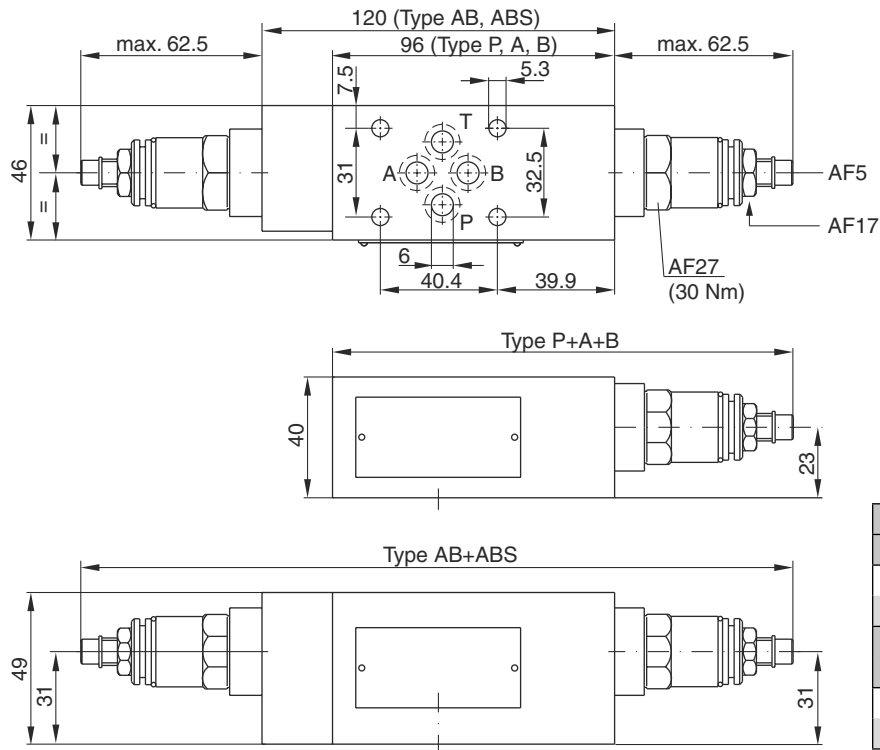


ZDV-ABS02



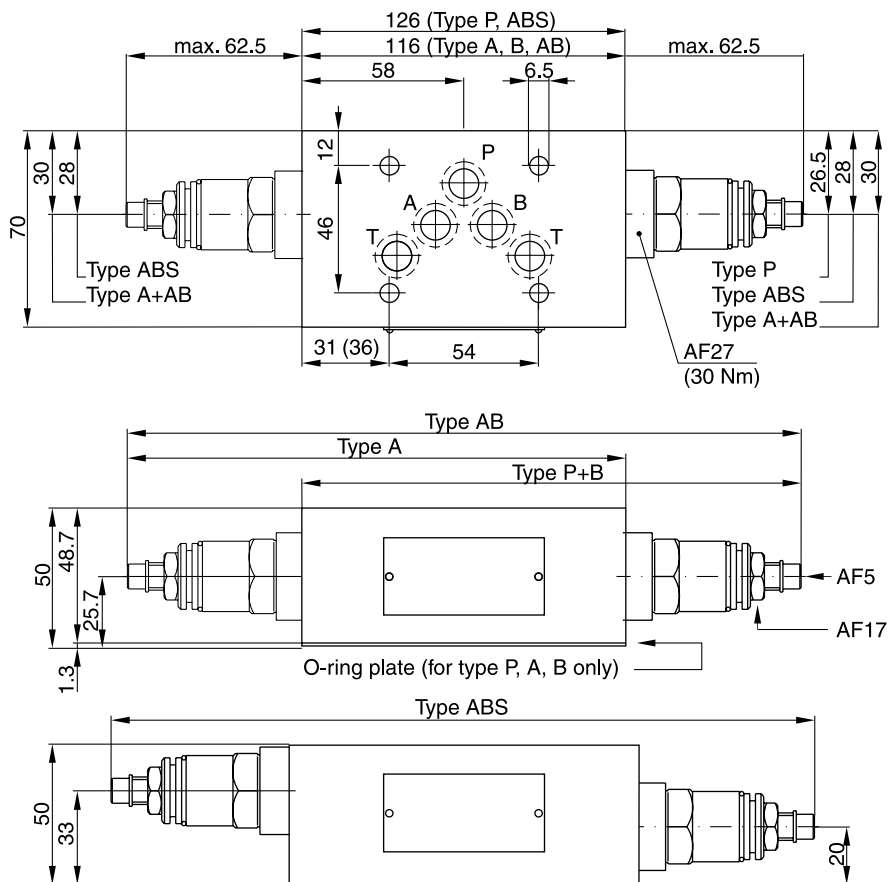
All characteristic curves measured with HLP46 at 50 °C.

ZDV01

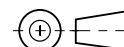


| Seal kit | |
|--------------------|-------------|
| Seal | Order code |
| 1 | 098-91182-0 |
| 5 | 098-91183-0 |
| Complete cartridge | |
| Pressure stage | Order code |
| 1 | 098-91116-0 |
| 5 | 098-91117-0 |

7 ZDV02

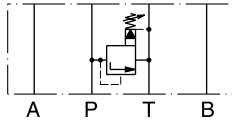


| Seal kit | |
|--------------------|-------------|
| Seal | Order code |
| 1 | 098-91076-0 |
| 5 | 098-91077-0 |
| Complete cartridge | |
| Pressure stage | Order code |
| 1 | 098-91116-0 |
| 5 | 098-91117-0 |



ZDV01

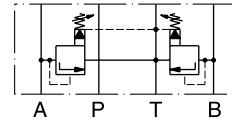
Pressure control P-T



Series
 ZDV-P01-1-S0-D1
 ZDV-P01-5-S0-D1

Order No.
 098-91201-0
 098-91202-0

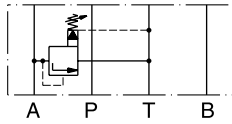
Pressure control A-T & B-T



Series
 ZDV-AB01-1-S0-D1
 ZDV-AB01-5-S0-D1

Order No.
 098-91207-0
 098-91208-0

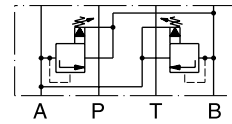
Pressure control A-T



Series
 ZDV-A01-1-S0-D1
 ZDV-A01-5-S0-D1

Order No.
 098-91203-0
 098-91204-0

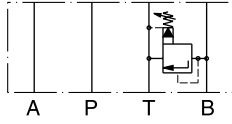
Pressure control A-B & B-A



Series
 ZDV-ABS01-1-S0-D1
 ZDV-ABS01-5-S0-D1

Order No.
 098-91209-0
 098-91210-0

Pressure control B-T

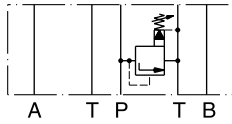


Series
 ZDV-B01-1-S0-D1
 ZDV-B01-5-S0-D1

Order No.
 098-91205-0
 098-91206-0

ZDV02

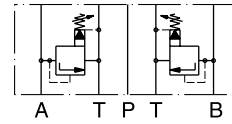
Pressure control P-T



Series
 ZDV-P02-1-S0-D1
 ZDV-P02-5-S0-D1

Order No.
 098-91034-0
 098-91035-0

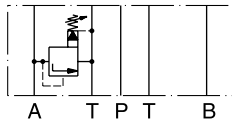
Pressure control A-T & B-T



Series
 ZDV-AB02-1-S0-D1
 ZDV-AB02-5-S0-D1

Order No.
 098-91040-0
 098-91041-0

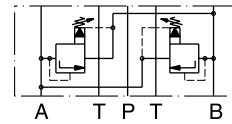
Pressure control A-T



Series
 ZDV-A02-1-S0-D1
 ZDV-A02-5-S0-D1

Order No.
 098-91036-0
 098-91037-0

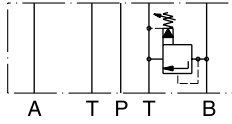
Pressure control A-B & B-A



Series
 ZDV-ABS02-1-S0-D1
 ZDV-ABS02-5-S0-D1

Order No.
 098-91042-0
 098-91043-0

Pressure control B-T



Series
 ZDV-B02-1-S0-D1
 ZDV-B02-5-S0-D1

Order No.
 098-91038-0
 098-91039-0

